

color index

Over 1100
Color Combinations
CMYK and Updated
RGB Formulas
For Print and
Web Media

REVISED
EDITION

Includes
Downloadable
Color
Swatches

JIM KRAUSE

READ ME FOR COLOR INDEX, REVISED EDITION SWATCH SAMPLES

How to Insert Color Swatches Into Your Document

Each combination of colors from the *Color Index, Revised Edition* book are contained within an .ase (Adobe Swatch Exchange) file. These .ase files can be uploaded into CS2/CS3/CS4 versions of Illustrator, InDesign and Photoshop files.

The .ase files in this download are organized according to the page in which they appear in the *Color Index, Revised Edition* book. These .ase files can be found and uploaded using the following procedure.

1. Select *Load Swatches* from the Swatches Palette in Photoshop or InDesign. In Illustrator, use *Open Swatch Library: Other Library*.
2. Navigate to the *Color Index RE Swatch Samples* folder.
3. Open either the *CMYK* or *RGB* folder (depending on which type of color formula you are seeking).
4. Locate the page number on which your color combination appears. You'll see that all .ase files are labeled according to their page number and their position on the page (the topmost color combination on each page is number 1).

Important Note Regarding Color Accuracy on Computer Monitors

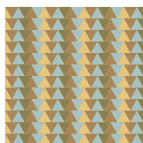
This tool is primarily designed to be used in conjunction with the *Color Index, Revised Edition* book. Be aware it is inadvisable to select CMYK colors from a computer screen, since the calibration of RGB monitors varies and cannot be relied upon when choosing colors for print media. The best way to ensure the accuracy of your CMYK selections is to visually refer to the printed samples in *Color Index, Revised Edition*.



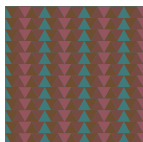
MUTED



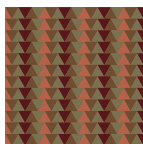
0c	10m	50y	30k
30c	30m	60y	40k
0c	60m	60y	30k
40c	70m	40y	30k
190r	168g	110b	
122r	112g	80b	
181r	98g	75b	
123r	76g	93b	



10c	30m	60y	30k
20c	0m	10y	20k
10c	20m	60y	0k
20c	20m	60y	40k
169r	135g	89b	
167r	193g	192b	
230r	198g	124b	
137r	128g	83b	



40c	60m	80y	40k
60c	80m	80y	10k
60c	10m	30y	40k
10c	60m	30y	40k
110r	77g	49b	
119r	75g	68b	
64r	122g	123b	
148r	85g	95b	



40c	60m	80y	40k
30c	30m	60y	40k
0c	60m	60y	30k
60c	100m	100y	40k
110r	77g	49b	
122r	112g	80b	
181r	98g	75b	
87r	24g	27b	

DE-INTENSIFIED URBAN HUES

